



Basil Ambers – St. Michael's Indian Residential School, Alert Bay, British Columbia (LHF2)



Beverly Albrecht – Mohawk Institute, Brantford, Ontario (LHF13)



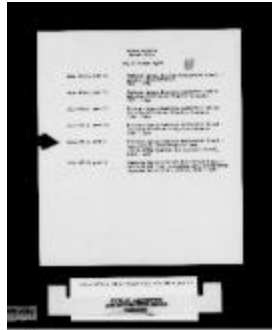
Ed Bitternose – Gordon's, Muscowequan and Lebret Residential Schools, Saskatchewan (LHF18)



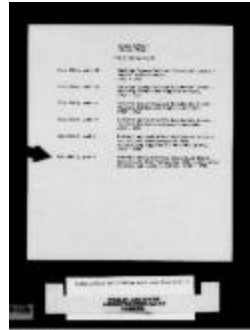
George Francis – Shubenacadie Indian Residential School, Nova Scotia (LHF20)



G.H. Raley, Principal, with staff of the Coqualeetza Industrial Institute (13d-c5701-d3)



Kamloops Agency - Kamloops Industrial School - Agricultural Land - Irrigation With Accompanying Supplies And Accounts



Kamloops Agency - Kamloops Industrial School - Agricultural Land - Irrigation With Accompanying Supplies And Accounts



Kamloops Agency - Kamloops Industrial School - Agricultural Land - Irrigation With Accompanying Supplies And Accounts



Kamloops Agency - Kamloops Residential School - Livestock - Supplies - Accounts, 1920-1938 (2056029)



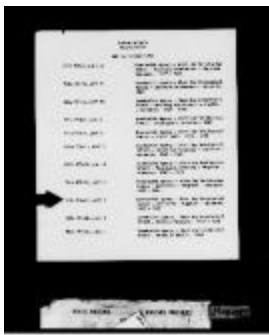
Kootenay Agency - Kootenay Residential School - Livestock - Accounts, 1925-1944 (2096121)



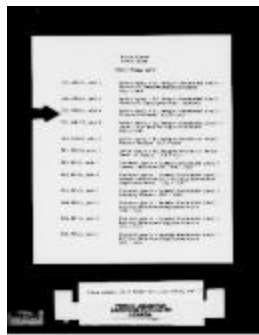
Kootenay Agency - Kootenay Residential School - Livestock - Accounts, 1925-1944 (2056039)



Kwakwewlth Agency - Alert Bay Residential School - Livestock - Supplies - Accounts, 1921-1932 (2055984)



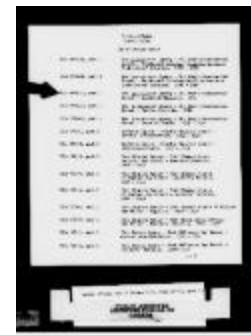
Kwawkwath Agency - Alert Bay Residential School - Livestock - Supplies - Accounts, 1938-1947 (2056693)



Lytton Agency - St. George's Residential School - Livestock - Accounts, 1933-1943 (2056065)



Lytton Agency - St. George's Residential School - School Land, 1891-1929 (2056071)



New Westminster Agency - St. Mary's Residential School - Livestock - Supplies, 1931 (2056079)



Photograph (10a-c000619-d0008-001)



Photograph (10a-c000617-d0009-001)



St. George's School Farm, Lytton, B.C. - Cows in Field (13a-c004554-d1041-001)



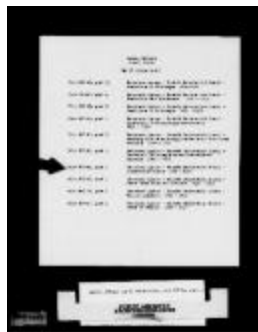
St. George's School, Lytton, B.C. - School girl feeding lamb (13a-c004554-d1038-001)



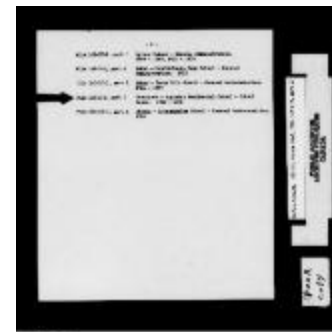
Stuart Lake Agency - Lejac Residential School - Livestock, 1925-1940 (2056023)



The Indian Residential School (MOA_20180215_005)



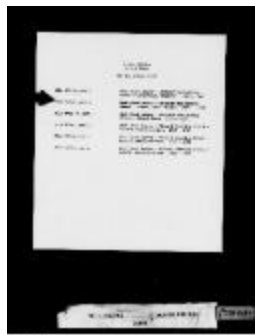
Vancouver Agency - Sechelt Residential School - Livestock - Accounts, 1923-1946 (2056058)



Vancouver Agency - Squamish Residential School - School Lands, 1922-1932 (2054384)



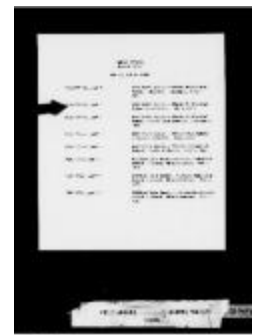
West Coast Agency - Ahousaht Residential School - Inspectors' Reports, 1933-1940 (2055993)



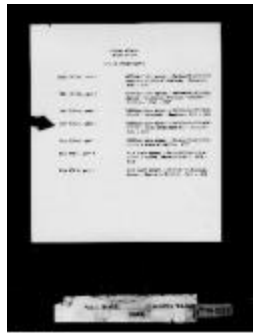
West Coast Agency - Ahousaht Residential School - School Land (Plan), 1907-1936 (2055994)



West Coast Agency - Ahousaht Residential School - School Land, 1930-1936 (2055996)



West Coast Agency - Alberni Residential School - Livestock, 1931-1940 (2055999)



Williams Lake Agency - Caribou Residential School - Cadet Corps Band Set - Accounts, 1945-1946 (2056009)



Williams Lake Agency - Caribou Residential School - Livestock - Supplies, 1927-1932 (2056008)