



[Alberni?] Residential School (38f-c000591-d0001-002)



Alert Bay from behind Boy's School - Principal's shed and part of orchard in foreground (13a-c004554-d0006-001)



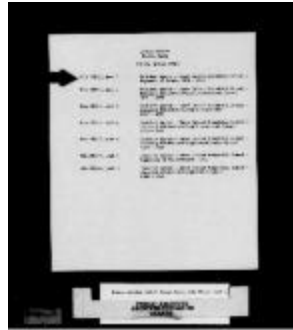
Alert Bay from Farm - Girls' Home in Centre (13a-c004554-d0010-001)



Alert Bay Village from beach near St. Michael's Boys' School (sawmill and church in centre) (13a-c004554-d0002-001)



[An Indian crew setting sail for Oxford House carrying the missionary and his wife and child, Norway House, Man.] (13d-c5712-d72)



Cowichan Agency - Kuper Island Industrial School - Payments Of Grants, 1913-1952 (2056048)



[Cree Indian guides portage across rapids near Norway House] (13d-c5712-d74)



[Cree Indian women camping at Norway House at treaty time] (13d-c5712-d54)



"Dioflues" [?] and Co., with tub and old stump (13a-c004554-d0021-001)



Fishing tug on which trip is made up Lake Winnipegosis (13d-c5712-d55)



Forestry Island as seen from Norway House (13d-c5712-d56)



[Gathering outside Rossville Mission Church after Sunday service] (13d-c5712-d97)



Girls' dormitory, Indian Residential School, Edmonton, Alta. (13d-c5704-d5)



Girls' sewing class, Indian Residential School, Edmonton Alta. (13d-c5704-d14)



Group of female students, Indian Residential School, Edmonton, Alta. (13d-c5704-d17)



[Hospital run by the government, Norway House, Man.] (13d-c5712-d65)



Hudson's Bay Co. monument to a factor who was drowned, Norway House (13d-c5712-d64)



Hudson's Bay Company Fort, Norway House, Man. (13d-c5712-d62)



Hudson's Bay Company Fort, Norway House, Man. (13d-c5712-d75)



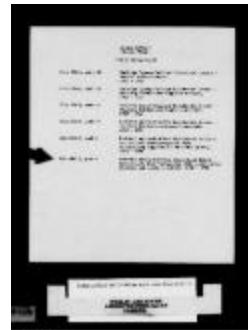
[Indian Boarding School, Norway House, Man.] (13d-c5712-d36)



Indian Residential School, Edmonton, Alta. (13d-c5704-d24)



John Steinhauer ploughing with the tractor, Indian Residential School, Edmonton (13d-c5704-d6)



Kamloops Agency - Kamloops Industrial School - Agricultural Land - Irrigation With Accompanying Supplies And Accounts



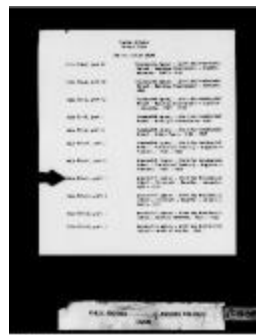
Kamloops Agency - Kamloops Residential School - Livestock - Supplies - Accounts, 1920-1938 (2056029)



Kootenay Agency - Kootenay Residential School - Livestock - Accounts, 1925-1944 (2096121)



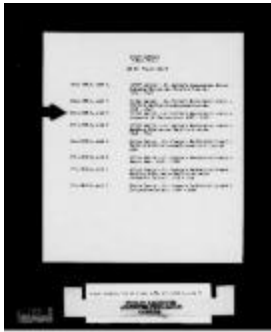
Kootenay Agency - Kootenay Residential School - Livestock - Accounts, 1925-1944 (2056039)



Kwawkewith Agency - Alert Bay Residential School - Livestock - Supplies - Accounts, 1921-1932 (2055984)



Lytton Agency - St. George's Residential School - Cadets Corps Band Set - Supplies - Accounts, 1924-1930 (2056066)



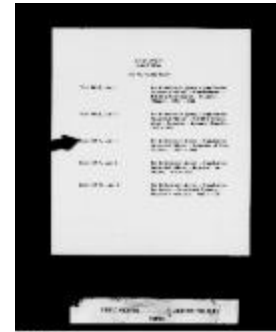
Lytton Agency - St. George's Residential School - Inspector Of Construction, 1927-1929 (2057510)



Lytton Agency - St. George's Residential School - School Land, 1891-1929 (2056071)



My sister [Nellie Long?] and an Indian girl named Nellie Queskakapaw, Norway House (13d-c5712-d9)



New Westminster Agency - Coqualeetza Industrial School - Inspector Of Construction, 1921-1934 (2057047)



Our baseball team starting for Edmonton in the school truck to play city school team, Indian Residential School, Edmonton, Alta. (13d-c5704-d12)



Our pupils, Indian Residential School, Edmonton, Alberta (13d-c5704-d11)



Panorama of cleared land on farm, Alert Bay School - Photo #3 (13a-c004554-d0015-001)



Panorama of Farm, Alert Bay School - Photo #1 (13a-c004554-d0013-001)



Panorama of farm, Alert Bay School - photo #2 (13a-c004554-d0014-001)



Photograph, 1928 (10a-c000617-d0014-001)



[Residential school and teachers' residence, Norway House] (13d-c5712-d31)



Rev. and Mrs. Gaudin, Rossville Mission, Norway House, Man. (13d-c5712-d59)



Rev. and Mrs. Gaudin standing beside the James Evans pulpit, Norway House (13d-c5712-d60)



Rossville Mission and the memorial, Norway House (13d-c5712-d61)



Rossville Mission Church, Norway House (13d-c5712-d77)



[School building and grounds, Indian Residential School, Edmonton, Alta.] (13d-c5704-d25)



School buildings and campus, Indian Residential School, Edmonton, Alta. (13d-c5704-d21)



Signal Hill, Hudson's Bay Company Fort, Norway House, Man. (13d-c5712-d63)



Sketch of proposed Coqualeetza Institute, Sardis, B.C. (13d-c5701-d17)



Some of the children who were under my sister's charge : there are about 110 boys and girls living in the school at Norway House (13d-c5712-d10)



Staff group, Indian Residential School, Edmonton, Alta. (13d-c5704-d10)



St. George's School, Lytton, B.C. - part of our Staff, consisting of (left to right), self, Sewing Matron, Laundry Matron, Girls' Matron, Supervising Matron (13a-c004554-d1037-001)



St. Michael's Girls' Home and school farm (13a-c004554-d0008-001)



St. Michael's Industrial School for Boys, viewed from approach (13a-c004554-d0012-001)



Stuart Lake Agency - Lejac Residential School - Livestock, 1925-1940 (2056023)



Stuart Lake Agency - Lejac Residential School - Payments Of Grants, 1917-1952 (2056027)



Students of the Indian Residential School, Edmonton, Alta. (13d-c5704-d26)



[The barn and some houses, Indian Residential School, Edmonton] (13d-c5704-d20)



The hospital, the school, the agent's residence, and the doctor's residence, Norway House, Man. (13d-c5712-d66)



The quarterly council of the Cree Indians when they receive their treaty money from the government : the government agent is to be seen seated at the table, Norway House, Man. (13d-c5712-d53)



Two baseball teams : which [is] Indian which white (13d-c5704-d13)



Vancouver Agency - Sechelt Residential School - Livestock - Accounts, 1923-1946 (2056058)



Vancouver Agency - Squamish Residential School - School Lands, 1922-1932 (2054384)



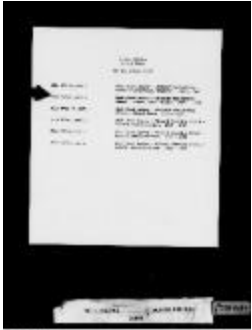
Vancouver Agency - Squamish Residential School - School Lands, 1922-1932 (2095926)



[View of Ross Island shoreline] (13d-c5712-d58)



[View of the lake at Norway House] (13d-c5712-d57)



West Coast Agency - Ahousaht Residential School - School Land (Plan), 1907-1936 (2055994)



Williams Lake Agency - Caribou Residential School - Livestock - Supplies, 1927-1932 (2056008)