



Aggie George - Lejac Indian Residential School, Fraser Lake, British Columbia (LHF6)



Basil Ambers – St. Michael's Indian Residential School, Alert Bay, British Columbia (LHF2)



Beverly Albrecht – Mohawk Institute, Brantford, Ontario (LHF13)



Blanche Hill-Easton – Mohawk Institute, Brantford, Ontario (LHF15)



Cecile Ketlo – Lejac and Kamloops Residential Schools, British Columbia (LHF12)



Ed Bitternose – Gordon's, Muscowequan and Lebret Residential Schools, Saskatchewan (LHF18)



Eunice Gray – St. Andrew's Anglican Mission, Whitefish Lake, Alberta (LHF19)



George Francis – Shubenacadie Indian Residential School, Nova Scotia (LHF20)



G.H. Raley, Principal, with staff of the Coqualeetza Industrial Institute (13d-c5701-d3)



In the laundry room of the Coqualeetza Industrial School (13d-c5701-d18)



Jacqueline Barney – Shingwauk, Sault Sainte Marie, Ontario [Audio] (LHF22)



Junior Knitting Class, Ahousaht (38f-c000112-d0001-001)



Kamloops Agency - Kamloops Industrial School - Agricultural Land - Irrigation With Accompanying Supplies And Accounts



Kamloops Agency - Kamloops Industrial School - Agricultural Land - Irrigation With Accompanying Supplies And Accounts



Kamloops Agency - Kamloops Industrial School - Agricultural Land - Irrigation With Accompanying Supplies And Accounts



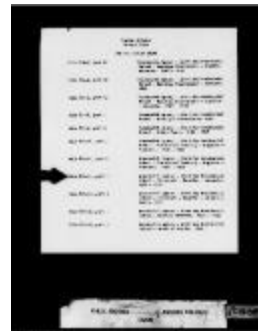
Kamloops Agency - Kamloops Residential School - Livestock - Supplies - Accounts, 1920-1938 (2056029)



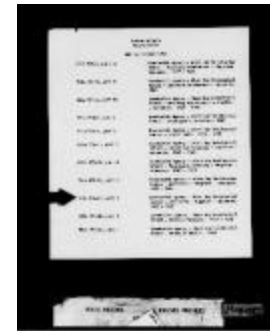
Kootenay Agency - Kootenay Residential School - Livestock - Accounts, 1925-1944 (2096121)



Kootenay Agency - Kootenay Residential School - Livestock - Accounts, 1925-1944 (2056039)



Kwawkwalth Agency - Alert Bay Residential School - Livestock - Supplies - Accounts, 1921-1932 (2055984)



Kwawkwalth Agency - Alert Bay Residential School - Livestock - Supplies - Accounts, 1938-1947 (2056693)



Letter from Principal Caldwell to Mrs. J.C. Goodfellow (38f-c000170-d0013-001)



Lily Wildman outside minister's house (a034661)



Log school built by Indians at Anahim Lake (38b-c000818-d0002-001)



Lucille Mattess – Lejac Indian Residential School, Fraser Lake, British Columbia (LHF1)



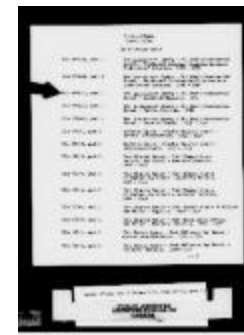
Lytton Agency - St. George's Residential School - Livestock - Accounts, 1933-1943 (2056065)



Lytton Agency - St. George's Residential School - School Land, 1891-1929 (2056071)



Mabel Harry Fontaine – Fort Alexander Residential School, Manitoba (LHF25)



New Westminster Agency - St. Mary's Residential School - Livestock - Supplies, 1931 (2056079)



Photograph (10a-c000619-d0008-001)



Photograph (10a-c000617-d0009-001)



Photograph (10a-c000480-d0027-001)



Photograph (10a-c000480-d0055-001)



Photograph (10a-c000479-d0004-002)



Photograph, 1926 (10a-c000511-d0027-001)



Photograph, 1958 (10a-c000480-d0054-001)



Pupils at St. George's School (13a-c001966-d0001-001)



Rita Watcheston – Lebret, Saskatchewan (LHF30)



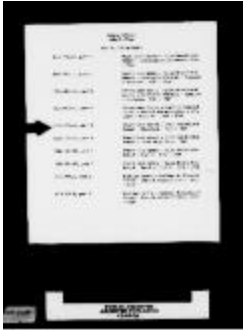
Sewing Room (38f-c000058-d0025-001)



St. George's School Farm, Lytton, B.C. - Cows in Field (13a-c004554-d1041-001)



St. George's School, Lytton, B.C. - School girl feeding lamb (13a-c004554-d1038-001)



Stuart Lake Agency - Lejac Residential School - Livestock, 1925-1940 (2056023)



The Indian Residential School (MOA_20180215_005)



Vancouver Agency - Sechelt Residential School - Livestock - Accounts, 1923-1946 (2056058)



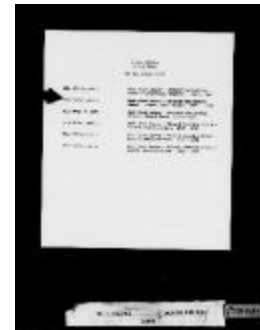
Vancouver Agency - Squamish Residential School - School Lands, 1922-1932 (2054384)



Vancouver Agency - Squamish Residential School - School Lands, 1922-1932 (2095926)



West Coast Agency - Ahousaht Residential School - Inspectors' Reports, 1933-1940 (2055993)



West Coast Agency - Ahousaht Residential School - School Land (Plan), 1907-1936 (2055994)



West Coast Agency - Ahousaht Residential School - School Land, 1930-1936 (2055996)



West Coast Agency - Alberni Residential School - Livestock, 1931-1940 (2055999)



Williams Lake Agency - Caribou Residential School - Cadet Corps Band Set - Accounts, 1945-1946 (2056009)



Williams Lake Agency - Caribou Residential School - Livestock - Supplies, 1927-1932 (2056008)