



24th of May picnic at the Crosby Girls' Home (13d-c5702-d5)



An historical scene of Port Simpson (38f-c000140-d0001-001)



Baptismal Font (A1776 a-c)



Children and teacher (38f-c000143-d0001-001)



Children And Teacher (38f-c000144-d0001-001)



Crosby Girl's School, Port Simpson, B.C. (13d-c5702-d7)



Emma Crosby (38f-c000581)



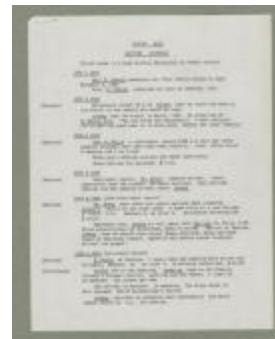
Girls at the Crosby Girls' School wearing aprons sent from Beaver Band Club of Trail, B.C. (13d-c5702-d14)



[Girls from the Crosby Girls' School, Port Simpson] (13d-c5702-d13)



Indian day school, Port Simpson : Duke of Wellington, 79 years old (13d-c5702-d16)



Indian Work in British Columbia (38f-c000062-d0003-001)

Living by bells : a narrative of five schools in British Columbia (1874- 1970) (2833237)



Methodist Church and mission school, Port Simpson, B.C. (13d-c5702-d1)



Mission house and church, Port Simpson (a039358a)



Mission school house, Port Simpson, B.C. (13d-c5702-d4)



Morley Indian Residential School, rebuilt in 1935 (MOA\_20180215\_001)



Paddle (A1575)



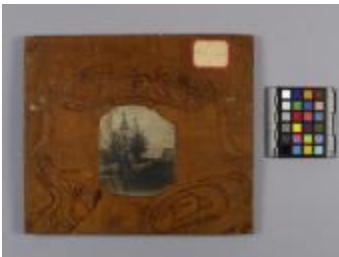
Picture Frame (1960/733)



Picture Frame (1960/728)



Picture Frame (1960/731)



Picture Frame (1960/732)



Port Simpson, B.C.: school, church, hospital (13d-c5702-d17)



Port Simpson, B.C.: school, church, hospital (13d-c5702-d17-p2)



Port Simpson, B.C.: school, church, hospital (13d-c5702-d17-p3)



Port Simpson, B.C.: school, church, hospital  
(13d-c5702-d17-p4)



Port Simpson, B.C.: school, church, hospital  
(13d-c5702-d17-p5)



Port Simpson, B.C.: school, church, hospital  
(13d-c5702-d17-p6)



Port Simpson, B.C.: school, church, hospital  
(13d-c5702-d17-p7)



Port Simpson, B.C.: school, church, hospital  
(13d-c5702-d17-p9)



Port Simpson, B.C.: school, church, hospital  
(13d-c5702-d17-p10)



Port Simpson, B.C.: school, church, hospital  
(13d-c5702-d17-p12)



Port Simpson, B.C.: school, church, hospital  
(13d-c5702-d17-p13)



Port Simpson, B.C.: school, church, hospital  
(13d-c5702-d17-p14)



Port Simpson, B.C.: school, church, hospital  
(13d-c5702-d17-p15)



Port Simpson, B.C.: school, church, hospital  
(13d-c5702-d17-p16)



Port Simpson, B.C.: school, church, hospital  
(13d-c5702-d17-p17)



Port Simpson, B.C.: school, church, hospital  
(13d-c5702-d17-p18)



Port Simpson, B.C.: school, church, hospital  
(13d-c5702-d17-p19)



Port Simpson, B.C.: school, church, hospital  
(13d-c5702-d17-p20)



Port Simpson, B.C.: school, church, hospital  
(13d-c5702-d17-p21)



Port Simpson, B.C.: school, church, hospital  
(13d-c5702-d17-p22)



Port Simpson, B.C.: school, church, hospital  
(13d-c5702-d17-p23)



Port Simpson, B.C.: school, church, hospital  
(13d-c5702-d17-p24)



Port Simpson, B.C.: school, church, hospital  
(13d-c5702-d17-p25)



Port Simpson, B.C.: school, church, hospital  
(13d-c5702-d17-p26)



Port Simpson, B.C.: school, church, hospital  
(13d-c5702-d17-p27)



Port Simpson, B.C.: school, church, hospital  
(13d-c5702-d17-p29)



Port Simpson, B.C.: school, church, hospital  
(13d-c5702-d17-p30)



Port Simpson, B.C.: school, church, hospital  
(13d-c5702-d17-p28)



Port Simpson, B.C.: school, church, hospital  
(13d-c5702-d17-p31)



Port Simpson, B.C.: school, church, hospital  
(13d-c5702-d17-p32)



Port Simpson, B.C.: school, church, hospital  
(13d-c5702-d17-p33)



Port Simpson, B.C.: school, church, hospital  
(13d-c5702-d17-p35)



Port Simpson, B.C.: school, church, hospital  
(13d-c5702-d17-p34)



Port Simpson, B.C.: school, church, hospital  
(13d-c5702-d17-p36)



Port Simpson, B.C.: school, church, hospital  
(13d-c5702-d17-p37)



Port Simpson, B.C.: school, church, hospital  
(13d-c5702-d17-p38)



Port Simpson, B.C.: school, church, hospital  
(13d-c5702-d17-p39)



Port Simpson, B.C.: school, church, hospital  
(13d-c5702-d17-p40)



Port Simpson, B.C.: school, church, hospital  
(13d-c5702-d17-p41)



Port Simpson, B.C.: school, church, hospital  
(13d-c5702-d17-p42)



Port Simpson, B.C.: school, church, hospital  
(13d-c5702-d17-p43)



Port Simpson, B.C.: school, church, hospital  
(13d-c5702-d17-p44)



Port Simpson, B.C.: school, church, hospital  
(13d-c5702-d17-p45)



Port Simpson, B.C.: school, church, hospital  
(13d-c5702-d17-p46)



Port Simpson, B.C.: school, church, hospital  
(13d-c5702-d17-p47)



Port Simpson, B.C.: school, church, hospital  
(13d-c5702-d17-p48)



Port Simpson, B.C.: school, church, hospital  
(13d-c5702-d17-p49)



Port Simpson, B.C.: school, church, hospital  
(13d-c5702-d17-p50)



Port Simpson, B.C.: school, church, hospital  
(13d-c5702-d17-p51)



Port Simpson, B.C.: school, church, hospital  
(13d-c5702-d17-p52)



Port Simpson, B.C.: school, church, hospital  
(13d-c5702-d17-p53)



Port Simpson, B.C.: school, church, hospital  
(13d-c5702-d17-p54)



Port Simpson, B.C.: school, church, hospital  
(13d-c5702-d17-p55)



Port Simpson, B.C.: school, church, hospital  
(13d-c5702-d17-p56)



Port Simpson, B.C.: school, church, hospital  
(13d-c5702-d17-p57)



Port Simpson, B.C.: school, church, hospital  
(13d-c5702-d17-p58)



Port Simpson, B.C.: school, church, hospital  
(13d-c5702-d17-p59)



Port Simpson, B.C.: school, church, hospital  
(13d-c5702-d17-p60)



Port Simpson, B.C.: school, church, hospital  
(13d-c5702-d17-p61)



Port Simpson C.G.I.T. (38f-c000138-d0001-001)



Port Simpson - Crosby Girls' Residential School - Graduates, 1943 (38f-c000137-d0001-001)



Port Simpson - Crosby Girls' Residential School, Students and Staff, 1943 (38f-c000103-d0001-001)



Port Simpson Group of Girls (38f-c000105-d0001-001)



Pt. Simpson Girls (38f-c000142-d0001-001)



Rev. Thomas and Emma Crosby with Miss Susanna Lawrence and Indian school girls, Port Simpson, B.C. (13d-c5702-d3)



[Rev. Thomas Crosby and Miss Hargrave, teacher, with Henry Tate, interpreter and assistant teacher, and students of the Methodist Indian school, on the steps of the Church, Port Simpson, B.C.] (13d-c5702-d2)



Skeena River Agency - Crosby Girls Residential School (Port Simpson) - Audit Reports, 1935-1948 (2056052)



Skeena River Agency - Port Simpson United Church Residential School - Payments Of Grants, 1931-1948 (2056053)



Skeena River Agency - Port Simpson United Church Residential School - Inspector Of Construction, 1913-1914 (2056054)



Skeena River Agency - Port Simpson United Church Residential School - School Land, 1913-1914 (2056055)



Staff and girls of the Crosby Girls' School (13d-c5702-d11)



Staff of the Crosby Girls' School (13d-c5702-d8)



Staff of the Crosby Girls' School (13d-c5702-d9)



Staff of the Crosby Girls' School (13d-c5702-d12)



[Teacher and pupils, Indian day school, Port Simpson, B.C.] (13d-c5702-d15)





Teachers and students of Crosby Home (38f-c000133)



The Crosby Girls' Home at Port Simpson, Miss S. Hart in charge, 1888-1893 (38f-c000139-d0001-001)



The Home Miss Sarah Hart went to at Port Simpson in 1888 . . . She is standing at the left, Miss Ross at right (38f-c000141-d0001-001)



The Officers for past year of the Na Na Kwa Band, Port Simpson (38f-c000145-d0001-001)