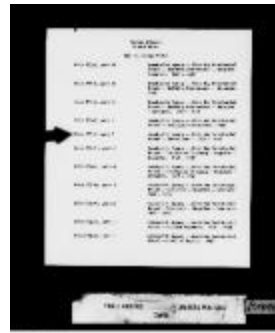


Cowichan Agency - Kuper Island Industrial School - Inspector Of Construction, 1914 (2057507)



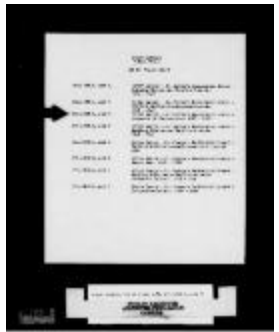
Former building, burned 1937. Replaced in 1939. (13d-c5699-d2)



Kwawkwalth Agency - Alert Bay Residential School - School Land, 1932-1948 (2057052)



Log school built by Indians at Anahim Lake (38b-c000818-d0002-001)



Lytton Agency - St. George's Residential School - Inspector Of Construction, 1927-1929 (2057510)



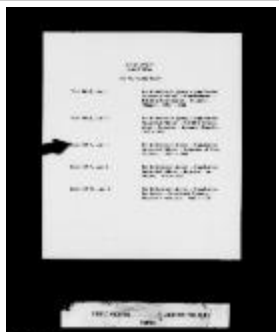
Lytton Agency - St. George's Residential School - School Land, 1891-1929 (2056071)



Morley Residential School after new wing was built (a034663)



[New Anahim Lake School] (38b-c000818-d0003-001)



New Westminster Agency - Coqualeetza Industrial School - Inspector Of Construction, 1921-1934 (2057047)



Photograph (10a-c000620-d0004-001)



Photograph, 1939 (10a-c000619-d0018-001)



Photograph, July 1921 (10a-c000619-d0009-001)



Plank playground and basketball court built by W.M.S. [Woman's Missionary Society] (13d-c5700-d2)



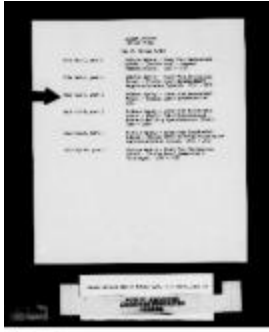
Skeena River Agency - Port Simpson United Church Residential School - Inspector Of Construction, 1913-1914 (2056054)



Skeena River Agency - Port Simpson United Church Residential School - School Land, 1913-1914 (2056055)



Stikine Agency - Lower Post Residential School (Teslin Lake) - Establishment - Supplies - Accounts (Plans), 1946-1949 (2056755)



Stikine Agency - Lower Post Residential School (Teslin Lake) - Specifications, 1949 (2056755)



Vancouver Agency - Sechelt Residential School - Inspectors Of Construction, 1921-1922 (2057640)



Vancouver Agency - Squamish Residential School - School Lands, 1922-1932 (2095926)



West Coast Agency - Ahousaht Residential School - School Land (Plan), 1907-1936 (2055994)