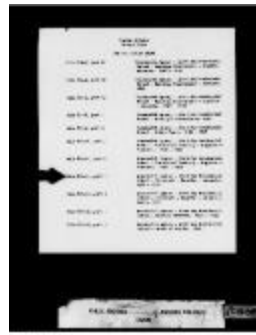


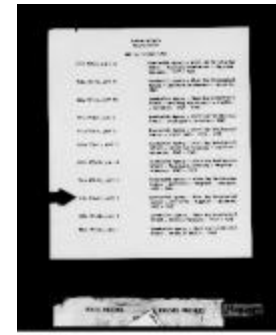
Cowichan Agency - Kuper Island Industrial School - Payments Of Grants, 1913-1952 (2056048)



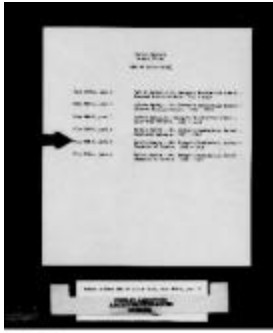
Kootenay Agency - Kootenay Residential School - Payments Of Grants, 1931-1951 (2056043)



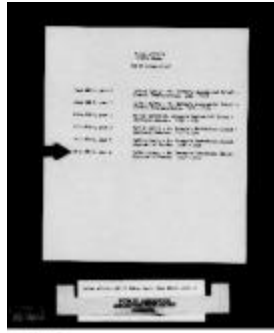
Kwakwewlth Agency - Alert Bay Residential School - Livestock - Supplies - Accounts, 1921-1932 (2055984)



Kwakwewlth Agency - Alert Bay Residential School - Livestock - Supplies - Accounts, 1938-1947 (2056693)



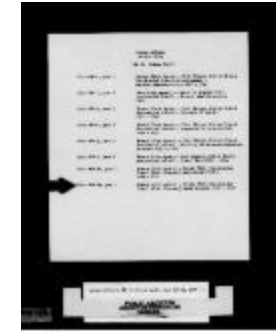
Lytton Agency - St. George's Residential School - Payment Of Grants, 1938-1943 (2057078)



Lytton Agency - St. George's Residential School - Payments Of Grants, 1943-1951 (2057283)



Lytton Agency - St. George's Residential School - School Land, 1891-1929 (2056071)



Skeena River Agency - Crosby Girls Residential School (Port Simpson) - Audit Reports, 1935-1948 (2056052)



Skeena River Agency - Port Simpson United Church Residential School - Payments Of Grants, 1931-1948 (2056053)



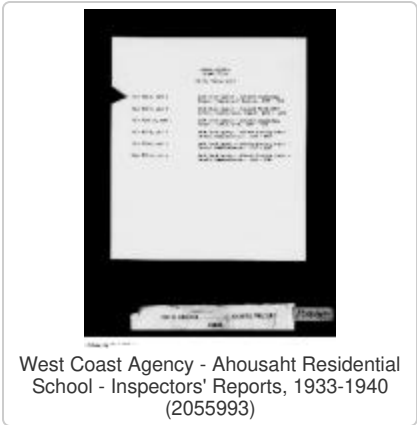
Stuart Lake Agency - Lejac Residential School - Payments Of Grants, 1917-1952 (2056027)



The Indian Residential School (MOA_20180215_005)



Vancouver Agency - Squamish Residential School - School Lands, 1922-1932 (2054384)



West Coast Agency - Ahousaht Residential School - Inspectors' Reports, 1933-1940 (2055993)