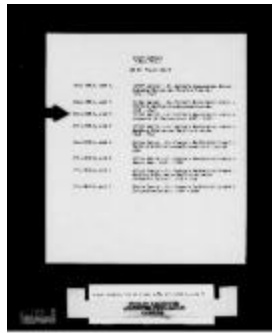
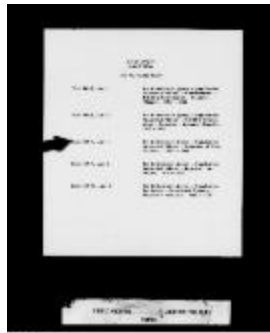


Cowichan Agency - Kuper Island Industrial School - Inspector Of Construction, 1914 (2057507)



Lytton Agency - St. George's Residential School - Inspector Of Construction, 1927-1929 (2057510)



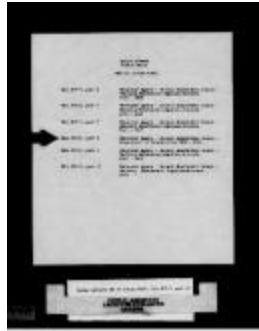
New Westminster Agency - Coqualeetza Industrial School - Inspector Of Construction, 1921-1934 (2057047)



Recommendations (38f-c000924-d0017-001)



Skeena River Agency - Port Simpson United Church Residential School - Inspector Of Construction, 1913-1914 (2056054)



Vancouver Agency - Sechelt Residential School - Inspectors Of Construction, 1921-1922 (2057640)