



24th of May picnic at the Crosby Girls' Home (13d-c5702-d5)



[A class in penmanship, Red Deer Institute] (13d-c5706-d13)



An historical scene of Port Simpson (38f-c000140-d0001-001)



[A splendid picture of our Indian Boarding School at Norway House] (13d-c5712-d40)



[Barns and pasture, Brandon Industrial Institute] (13d-c5711-d48)



Brandon Indian Institute in winter (13d-c5711-d49)



Brandon Indian Institute, Man. (13d-c5711-d51)



Brandon Institute (13d-c5711-d39)



[Brandon Institute in winter (side view)] (13d-c5711-d50)



Brandon Institute in winter (side view) (13d-c5711-d41)



[Carpentry class, Brandon Industrial Institute] (13d-c5711-d22)



Children and staff of E.L.M. Home, Kitimaat (13d-c5703-d24)



Children and staff of the Elizabeth Long Memorial Home (13d-c5703-d22)



Children at the Brandon Indian School (13d-c5711-d20)



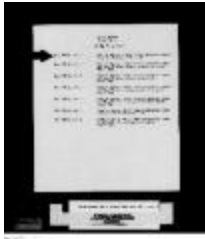
Children under 10 yrs, Coqualeetza (13d-c5701-d6)



Cote Day School (13d-c5707-d1)



Cowichan Agency - Kuper Island Industrial School - Inspector Of Construction, 1914 (2057507)



Cowichan Agency - Kuper Island Industrial School - Payments Of Grants, 1913-1952 (2056048)



[Cows in stalls in the dairy barn, Brandon Institute] (13d-c5711-d32)



Cows in the garden, Brandon Institute (13d-c5711-d24)



[Cows outside the dairy barn, Brandon Institute] (13d-c5711-d26)



[Cows outside the dairy barn in winter, Brandon Institute] (13d-c5711-d27)



[Cutting wood, Red Deer Institute] (13d-c5706-d18)



Dairy barn and silos, Brandon Institute (13d-c5711-d40)



Elizabeth Long Memorial Home : before cement foundation (13d-c5703-d5)



[Elizabeth Long Memorial Home : children and auxiliary women with banner] (13d-c5703-d17)



[Elizabeth Long Memorial Home : children and auxiliary women with banner] (13d-c5703-d18)



Elizabeth Long Memorial Home, Kitimaat (13d-c5703-d7)



Elizabeth Long Memorial Home, Kitimaat, B.C. (13d-c5703-d6)



Elizabeth Long Memorial Home, Kitimaat : we have sweet peas and nasturtiums all around this fence (13d-c5703-d12)



Field Book, 1 January 1914 (91a-c000040-d0001-001)



Field Notes, 1919 (91a-c000033-d0001-001)



File Hills Indian Colony Band (13d-c5708-d5)



File Hills Indian School (13d-c5708-d23)



First Eleven football team, Coqualeetza (13d-c5701-d8)



[Five students, Red Deer Industrial Institute] (13d-c5706-d16)



Four Cree Indian guides with their canoe, Norway House, Man. (13d-c5712-d50)



General view of the barns and livestock, Brandon Institute (13d-c5711-d25)



G.H. Raley, Principal, with staff of the Coqualeetza Industrial Institute (13d-c5701-d3)



Girls at the Indian school in the great lone land, Brandon, Man. (13d-c5711-d19)



Girls, Brandon Indian School (13d-c5711-d21)



Girls of the Elizabeth Long Memorial Home sewing at camp (13d-c5703-d25)



Girls' sewing class at Norway House Indian Boarding School (13d-c5712-d37)



Group of pupils and parents, Red Deer, Alta. (13d-c5706-d23)



[Handling a bull, Brandon Industrial Institute] (13d-c5711-d47)



[Horses outside the barn in early spring, Brandon Institute] (13d-c5711-d28)



[Horses outside the barn in winter, Brandon Institute] (13d-c5711-d29)



House of the instructor in carpentry, Brandon, Man. (13d-c5711-d38)



[Hudson's Bay Company Fort, Norway House] (13d-c5712-d76)



Indian home on the File Hills Colony (13d-c5708-d4)



[Interior of the dairy barn, Brandon Institute] (13d-c5711-d30)



[Interior of the dairy barn, Brandon Institute] (13d-c5711-d31)



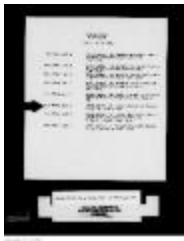
Kamloops Agency - Kamloops Industrial School - Agricultural Land - Irrigation With Accompanying Supplies And Accounts (Plans), 1912-1926 (2056034)



Kamloops Agency - Kamloops Industrial School - Agricultural Land - Irrigation With Accompanying Supplies And Accounts (Plans), 1912-1926 (2096117)



Kitimaat Auxiliary (13d-c5703-d13)



Lytton Agency - St. George's Residential School - School Land, 1891-1929 (2056071)



[Maple Grove Farm 1911 : a barn and horse team on the File Hills Colony belonging to a graduate of an Industrial School] (13d-c5708-d3)



Marching on Empire Day (13d-c5703-d15)



Miss High and her students, Brandon Industrial Institute (13d-c5711-d37)



Norway House Indian Boarding School on fire (13d-c5712-d38)



[Older girls from Poplar River attending the Indian Boarding School at Norway House] (13d-c5712-d34)



Part of the river near Red Deer Indian Institute (13d-c5706-d22)



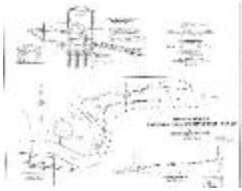
Photograph, 27 December 1917 (10a-c000432-d0021-001)



Photograph, 1916 (10a-c000392-d0006-001)



Plan, 1 January 1915 (91a-c000064-d0001-001)



Plan, 1 January 1917 (91a-c000038-d0001-001)



PL. OF IR 6 IN D.L.431 & SHOWING TOPOGRAPHY (91a-c000041-d0001-001)



Portage where some Indians left their camp fire burning and started a great [blaze?] (13d-c5712-d69)



[Principal Ferrier and two staff members supervising students in the dining hall at dinner time, Brandon Institute] (13d-c5711-d42)



Pupils and staff, Coqualeetza (13d-c5701-d10)



Red Deer Indian Residential School Alberta (13d-c5706-d1)



Red Deer Indian Residential School Alberta (13d-c5706-d1-p2)



Red Deer Indian Residential School Alberta (13d-c5706-d1-p3)



Red Deer Indian Residential School Alberta (13d-c5706-d1-p4)



Red Deer Indian Residential School Alberta (13d-c5706-d1-p5)



Red Deer Indian Residential School Alberta (13d-c5706-d1-p6)



Red Deer Indian Residential School Alberta (13d-c5706-d1-p7)



Red Deer Indian Residential School Alberta (13d-c5706-d1-p8)



Red Deer Indian Residential School Alberta (13d-c5706-d1-p9)



Red Deer Institute (13d-c5706-d21)



Red Deer Institute, Alberta (13d-c5706-d20)



[Rev. Denyes and pupils from the Indian Boarding School assembled outside Norway House Methodist Church] (13d-c5712-d33)



[Rev. Denyes with children from Beren's River who attend the Indian Boarding School at Norway House] (13d-c5712-d45)



[Rev. Denyes with children from Cross Lake who attend the Indian Boarding School at Norway House] (13d-c5712-d35)



[Rev. Denyes with children from Island Lake who attend Norway House Indian Boarding School] (13d-c5712-d42)



[Rev. Denyes with children from Oxford House who attend the Indian Boarding School at Norway House] (13d-c5712-d43)



[Rev. Denyes with children from Poplar River who attend the Indian Boarding School at Norway House] (13d-c5712-d44)



Sacrament Sunday at Norway House (13d-c5712-d122)



Scholars and staff, Brandon Institute (13d-c5711-d43)



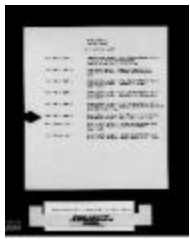
Scholars and staff, Brandon Institute (13d-c5711-d46)



Senior hockey team, Red Deer Institute (13d-c5706-d15)



Skeena River Agency - Port Simpson United Church Residential School - Inspector Of Construction, 1913-1914 (2056054)



Skeena River Agency - Port Simpson United Church Residential School - School Land, 1913-1914 (2056055)



Some Rapids Encountered On The River Journey Taken In The Fall Of 1910 (13d-c5712-d70)



Some Rapids On River Journey, Fall 1910 (13d-c5712-d71)



Staff and children of the Ahousaht School (13d-c5700-d5)



[Staff and students assembled outside the Indian Boarding School at Norway House] (13d-c5712-d39)



[Staff and students, Red Deer Indian Institute] (13d-c5706-d9)



Staff Elizabeth Long Memorial Home (13d-c5703-d21)



Staff of the Brandon Institute (13d-c5711-d34)



Staff of the Brandon Institute (13d-c5711-d35)



Staff of the Elizabeth Long Memorial Home (13d-c5703-d20)



Staff of the Indian Boarding School at Norway House (13d-c5712-d41)



Stuart Lake Agency - Lejac Residential School - Payments Of Grants, 1917-1952 (2056027)



Studying gardening included in the curriculum at I.I.S., Red Deer (13d-c5706-d14)



[Sunday camp on the river] (13d-c5712-d67)



[Teachers and children, Elizabeth Long Memorial Home, Kitimat] (13d-c5703-d16)



Teachers and students of the Coqualeetza Industrial Institute (13d-c5701-d1)



[Thanksgiving celebration decorations, Red Deer Institute] (13d-c5706-d17)



The boys and Mr. J.M. Joblin, I.I.S., Red Deer (13d-c5706-d12)



The Farm Buildings And Some Of The Fields Ready For Seeding (13d-c5711-d36)



The hockey team, Red Deer Institute (13d-c5706-d19)



[The new filly, Brandon Institute] (13d-c5711-d45)



The old school house, now used as woodshed : Mrs. Steinhauer, Rev. E.R. Steinhauer and Rev. Arthur Barner in foreground, Morley Alta. (13d-c5705-d7)



The principal, his wife, and the lady members of the staff of Coqualeetza Industrial Institute (13d-c5701-d2)



[Three staff members sitting on a fence, Brandon Institute] (13d-c5711-d44)



Transporting wood by horse-drawn cart, Red Deer Indian Institute, Alta. (13d-c5706-d28)



View of the Brandon Indian Institute and garden, Brandon, Man. (13d-c5711-d23)



Village of Norway House, Man. (13d-c5712-d51)



West Coast Agency - Ahousaht Residential School - School Land (Plan), 1907-1936 (2055994)



White Whale Indians visiting their children at the school (13d-c5706-d24)



Winnie and Ralph Apow : children of a graduate of the Red Deer School who married a white lady (13d-c5706-d27)



Winter Rapids hunting camp in summertime (13d-c5712-d68)



With heartiest Christmas greetings ... from the principal and staff of the Indian Industrial School, Brandon, Man. (13d-c5711-d54)



W.M.S. Home at Kitimaat (13d-c5703-d8)



[Woman and children picking vegetables in the garden at Norway House Indian Boarding School] (13d-c5712-d121)



[Young pupils of the Red Deer Institute : each girl has a doll which came as presents from the east] (13d-c5706-d26)